

**AJ MABAO PRESENTATION ON 17th JUNE
2019
BEES MANAGEMENT ON SITE**



BEE INSECT



What is bees?

Bees are flying insects related to wasp and ants, known for their role in pollination and in the case of the best known bee species, the western honey bee, for production honey and beeswax''

Bee' is 'an insect of a large group to which the honeybee belongs, including many solitary as well as social kind.

CONTRAST BETWEEN QUEEN BEE, WORKER AND DRONE ..,

QUEEN BEE - Refer to an adult , mated female (gyne) that live in honey bee colony or hive.

WORKER BEE - Is any female bee that lacks the full reproductive capacity of the colony queen bee.

DRONE BEE - Is a male bee unlike the female worker bee, drone do not have stingers and gather neither nectar nor pollen. A drone primary role is to mate with unfertilized queen.



WHAT ARE THE FOUR STAGE OF A BEE'S SHELF LIFE?

Honey bees develop in four distinct life cycle phases: **egg**, **larva**, **pupa**, and **adult**.

What is a female bee called?

The workers **bee** and the queen are both **female bees** but only the queen is allowed to reproduce. The drones are the male **bees**. The workers **bees** have many jobs including cleaning, finding pollen, building new comb, taking care of baby bees (**called** larva) etc.

HONEY BEE COLONY

Picture shown Organized colony of bees honey



BEEHIVE

Picture shows bees Hives



Beverly

Honey bees are social creatures and live within colonies with a queen, thousands of workers and a few male drones. Workers make these nests from wax, which they **secrete** from their **abdominal** glands.

How often bees appears?

Bees can appear at any time and at any location where there are lubricants and minerals in which they are taking for bee honey making. During the month of May-September is a bees season in our localities because of harvesting of bees honey that taking place in different forests, so during that time bees are searching new tenants.

WHAT IS SPECIAL ABOUT HONEY BEE?

The male **bees** in the hive are called drones. Their job in the hive is to find a queen in order to mate with. Male **bees** fly out and meet in **special** drones congregation areas where they hope to meet a queen...The **bees** use their honeycomb cell to raise their babies in , and to store nectar,**honey**, pollen and water.



Why male bees die after mating?

The next **male** honey **bee** to mate with the queen will remove the previous endophallus and eventually lose his own **after** ejaculation. **Male** honey **bees** are only able to mate seven to 10 times during a **mating** flight, and **after mating**, a **drone dies** quickly, as his abdomen rips open when his endophallus is removed

Drone dies quickly after mating



DRONES_BEE

The picture shown the Drone bee

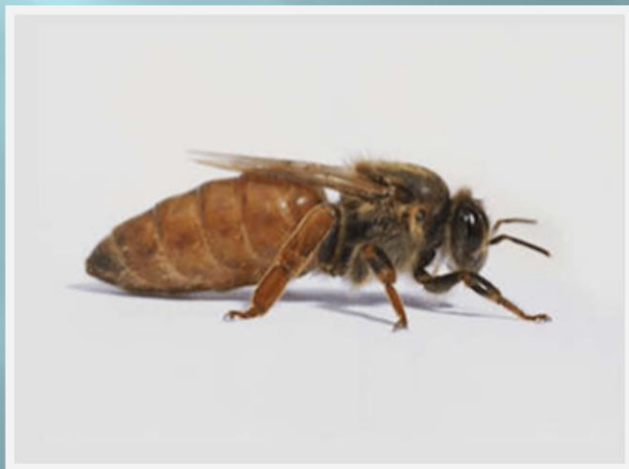


HOW LONG DOES A QUEEN BEE LIVE?

Workers live only **about 6 weeks** on average, and drones die immediately after mating. **Queen bees**, however, are quite long lived compared to other insects or even other bees. **Queen bees** have a productive lifespan of **2-3 years**, during which she may lay up to 2,000 eggs per day.

HOW LONG DOES A QUEEN HONEY BEE LIVE ?

On Average how long does a Queen Bee live? A queen honey bee's life lasts between one year and **five years**. A queen bumble bee lives only one year. Both honey bee and bumble bee queens' life spans depend on their ability to produce offsprings, they die when they are no longer able to lay fertile eggs.



HOW IS THE NEW QUEEN BEE CHOSEN?

All **bee** larvae are fed some royal jelly for the first few days after hatching but only **queen** larvae are fed the jelly exclusively. As a result of the difference in diet, the Queen will develop into a sexually mature female, Unlike the worker **bees**. Queen are raised in specially constructed **queen** cells.



BeverlyBee:

BEES MANAGEMENT ON SITE

The picture bellow shows how we are working during bees handling...

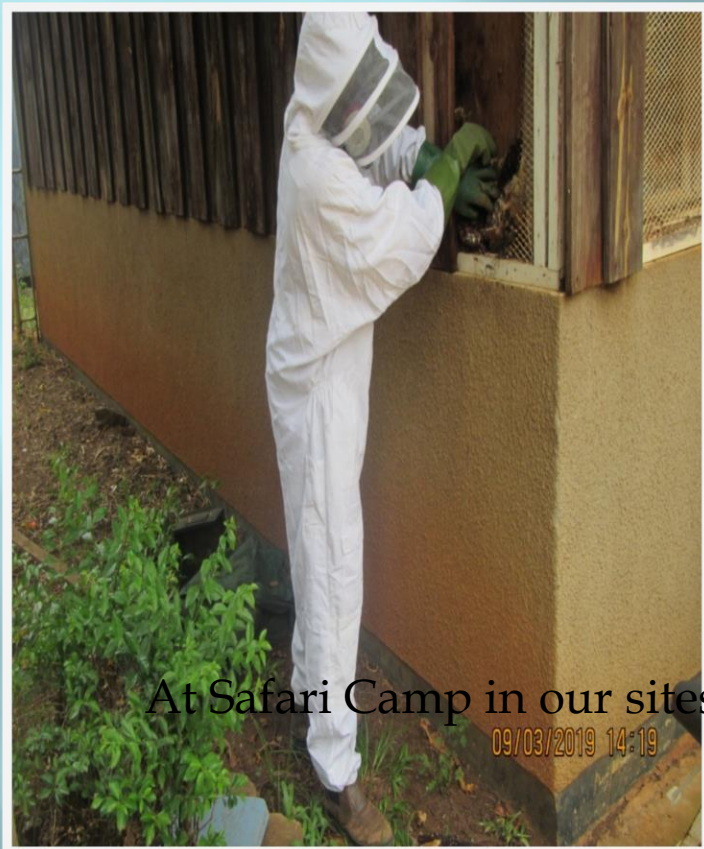


BEEHIVE

Some of pictures shows the location of bees Hives on the Mine site.



BEE COLONY



BEE MANAGEMENT ON SITE

Vector Control personnel attending bees at Safari Camp



BEEES MANAGEMENT ON SITE



BEEES MANAGEMENT ON SITE

- ▣ Why should we pay much attention to bees



- Bees can kill, never temper with bees it requires only professional personnel to deal with them.
- Special and authorized personal protective clothes should be used.



BEEES MANAGEMENT ON SITE

What to do when bees invade your work place.

- ▣ Do not disturb them.
- ▣ Evacuate from area or tag with barricades if possible.
- ▣ As soon as possible report to Environment Department.
- ▣ MOBILE PHONE NUMBERS: 0744974601, 0754433161, and 0755626606 EXT: 6515/6553/6555/6554

**END OF OUR PRESENTATION
THANK YOU!**